

DESCRIPTION

Block valves series "WB" are produced in the 2/2 - G 1/8, G 1/4 and G 1/2 monostable pneumatic functions in both the uni- and bi-directional versions. The working of the block valve consists in avoiding unexpected depressurisation of the cylinder's chamber due to lack of compressed air at the piloting port. For a correct functioning of the block valves we suggest to mount them directly on the cylinder.



3

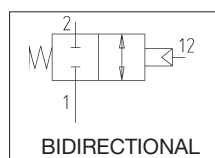
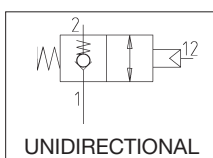
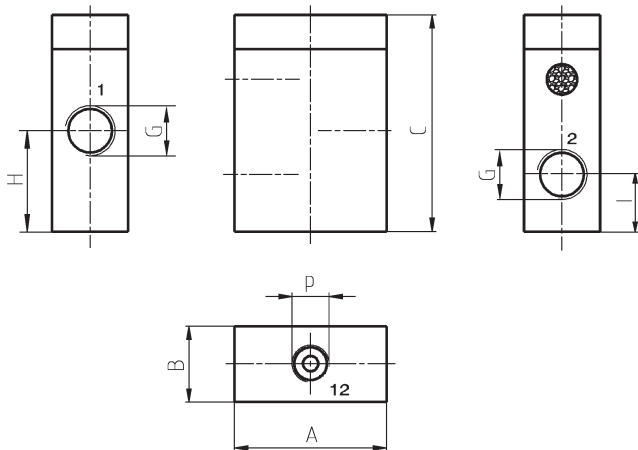
TECHNICAL DATA

Operating pressure	0 ÷ 10 bar
Minimum piloting pressure (at 10 bar)	G 1/8 = 2,5 bar G 1/4 = 4 bar G 1/2 = 5 bar
Working temperature	0 ÷ +70°C (with dry air -10°C)
Fluid	Filtered, unlubricated or continuous lubricated compressed air
Port size	G 1/8 - G 1/4 - G 1/2
Pneumating piloting port size	G 1/8
Nominal diameter	G 1/8 = 7 mm G 1/4 = 7 mm G 1/2 = 12 mm
Flow rate at 6 bar (with ΔP = 1 bar)	G 1/8 = 700 NI/min G 1/4 = 700 NI/min G 1/2 = 1900 NI/min

MATERIALS

Control rod	Anodized aluminium alloy
Body	Anodized aluminium alloy
Spring	Stainless steel
End plug	Nick-plated brass
Seals	NBR rubber
Washer	Brass

WB8U - WB8B - WB4U - WB4B - WB2U - WB2B



DESCRIPTION OF THE CONNECTION

- 1 = INPUT
- 2 = CYLINDER
- 12 = PILOTING

Symbol	A	B	C	H	I	P	Weight (g)	G	TYPE
	31	16	47	21,5	11,5	G 1/8	61	G 1/8	WB8U
	40	20	57	26,5	15		120	G 1/4	WB4U
	50	25	69	34,5	18		220	G 1/2	WB2U
	31	16	47	21,5	11,5		61	G 1/8	WB8B
	40	20	57	26,5	15		120	G 1/4	WB4B
	50	25	69	34,5	18		220	G 1/2	WB2B